



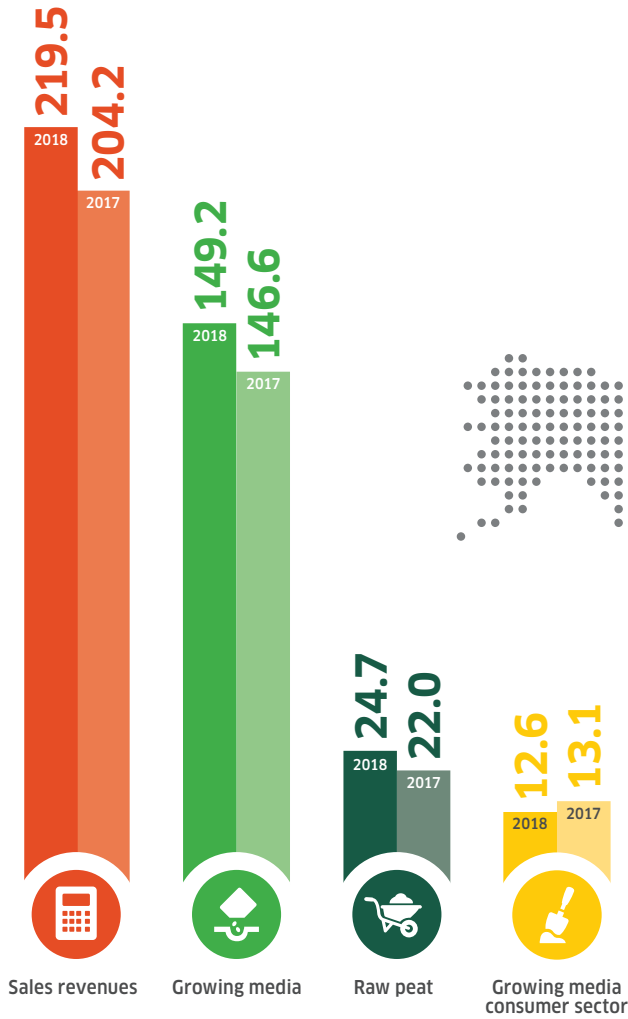
All at a glance:

Klasmann-Deilmann in facts and figures



we make it grow

Our turnovers



Our corporate structure



Our worldwide team



Our history ...

1913
Foundation of
Klasmann Werke

1959
Start of substrate
production

1990
Creation of Klasmann-Deilmann
GmbH through merger

2010
Start of wood
fibre production

70

Sales network for growing media in more than 70 countries worldwide



- Lead company
- Service company
- Sales companies

Our business areas

K SUBSTRATES

K SUBSTRATES Easy Growing

K SUBSTRATES Select

K SUBSTRATES Florabella

K BIOENERGY

K BIOENERGY Wood Chips

K BIOENERGY Wood Trading

K BIOENERGY Wood Services

K RAW MATERIALS

K RAW MATERIALS GreenFibre

K RAW MATERIALS TerrAktiv/FT

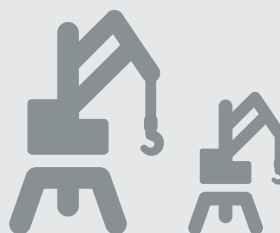
K RAW MATERIALS Peat

K RAW MATERIALS Containermulch

K INNOVATION

K INNOVATION Academy

K INNOVATION Growcoon



100 Ships



2,300 Wagons



Our logistics principle:

40,000 Trucks



Water before rail before road

8,800 Containers



2013

Foundation of Klasmann-Deilmann China

2016

Distribution of the Growcoon propagation system

2018

Inauguration of the new Innovation Center in Geeste

... continues



BEDDING SUBSTRATES



BIO SUBSTRATES



BLOCKING SUBSTRATES



CASING SUBSTRATES



CONTAINER SUBSTRATES



LANDSCAPE SUBSTRATES



POTTING SUBSTRATES



PROPAGATION SUBSTRATES



PEAT



CONSUMER SUBSTRATES

One portfolio, any application

K SUBSTRATES Easy Growing

International Bestsellers:

- Tried and tested recipes
- Suitable for many applications

K SUBSTRATES Select

Innovative Excellence:

- Individual solutions
- Special applications

K SUBSTRATES Florabella®

Professional Potting Soils:

- For consumers
- Quality potting soils ensure all plants grow well

Our quantities

3,599,000 m³
Substrates

Our extraction and production sites



Country	White peat extraction	Black peat extraction	Composting	Wood fibre production	Growing media production	Potting soil production	Energy peat production	Biomass from SRCP
Germany		✓	✓	✓	✓	✓		✓
Lithuania	✓	✓			✓		✓	✓
Latvia	✓	✓						
Ireland	✓			✓	✓			
Netherlands				✓	✓			
Belgium					✓			

4,115,000 m³
Peat Raw Materials



469,000 m³
Potting Soils
for Consumers



250,000 m³
Wood Fibre



78,000 m³
Green Compost



25,000 m³
Container Mulch

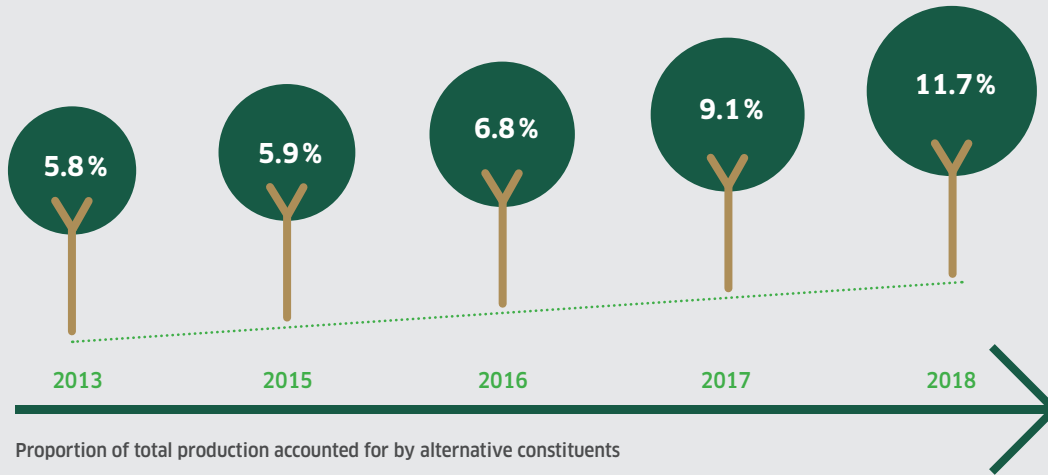


752,000 m³
Wood Chips

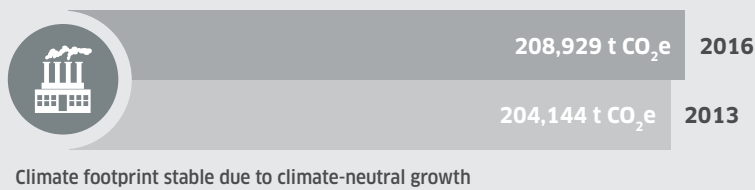
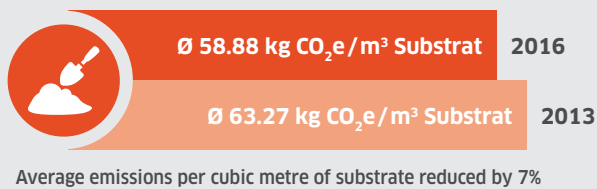
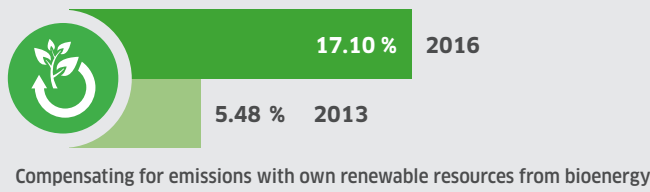


Our facts "Sustainability"

Our Goal

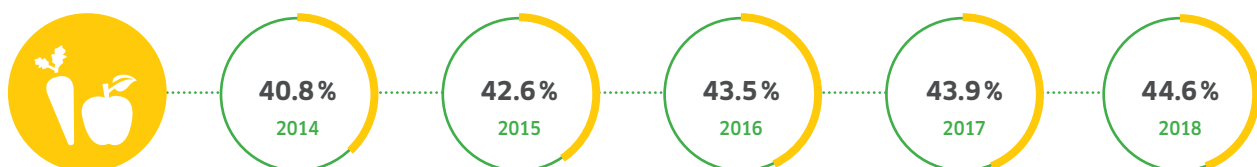


20
Proportion
of alter
constitue
total pr
1



20
CO₂-Emi
the Corpo
160,

Sales to food sector as proportion of total sales



Is 2020

Our portfolio "Bioenergy"

20:
tion of
native
nts of our
oduction
5%

20
ssions of
rate Group
000 t



Company Location Latvia:

- Klasmann-Deilmann Bioenergy SIA
- Main Location: Riga
- Further Locations: Vainode, Jelgava, Zilaiskalns, Valmiera, Tavgarsas (500 ha woodland)
- Storage

Our Short-rotation Coppice (SRC) Sites:

- Space Inventory: 3,368 ha (in use: 3,029 ha)
- Fast-growing tree clones: willows and poplars
- Harvested every 3 to 4 years
- Further cycles over more than 20 years



Company Location Lithuania:

- UAB Klasmann-Deilmann Bioenergy
- Main Location: Silute | SRC
- Further Locations: Laukesa, Paliai | SRC, Ezerelis
- Storage



Wood Chips

From short-rotation coppice (SRC) and timber, Biomass mix (wood chips + energy peat)



Wood Trading

Especially round timber, for use in energy applications



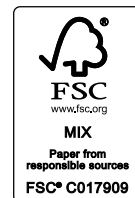
Renewable raw materials

From own, self-operated areas



Wood Services

Services in the field of close-to-nature forest management



we make it grow