

# The green benchmark

**GreenFibre from Klasmann-Deilmann**



*we make it grow*



## GreenFibre – the definition of high-grade wood fibre

We can look back on more than 20 years of success in using wood fibre as a constituent for our growing media. During this time we have been working intensively to develop the production technology required and to optimise the related processes in order to start the production of our own wood fibre. In 2010 we commissioned our first GreenFibre production plant in Germany, followed by production sites in the Netherlands and Ireland.

The production of GreenFibre includes the thermal and mechanical defibration of softwood chips. This process generates temperatures that can exceed 100 °C, with the result that any incompatible substances are

expelled as gases, thereby making the GreenFibre a sanitized and safe constituent. The structure and physical properties of GreenFibre can be adjusted very precisely. The result is a constituent of consistently high quality based on renewable resources.

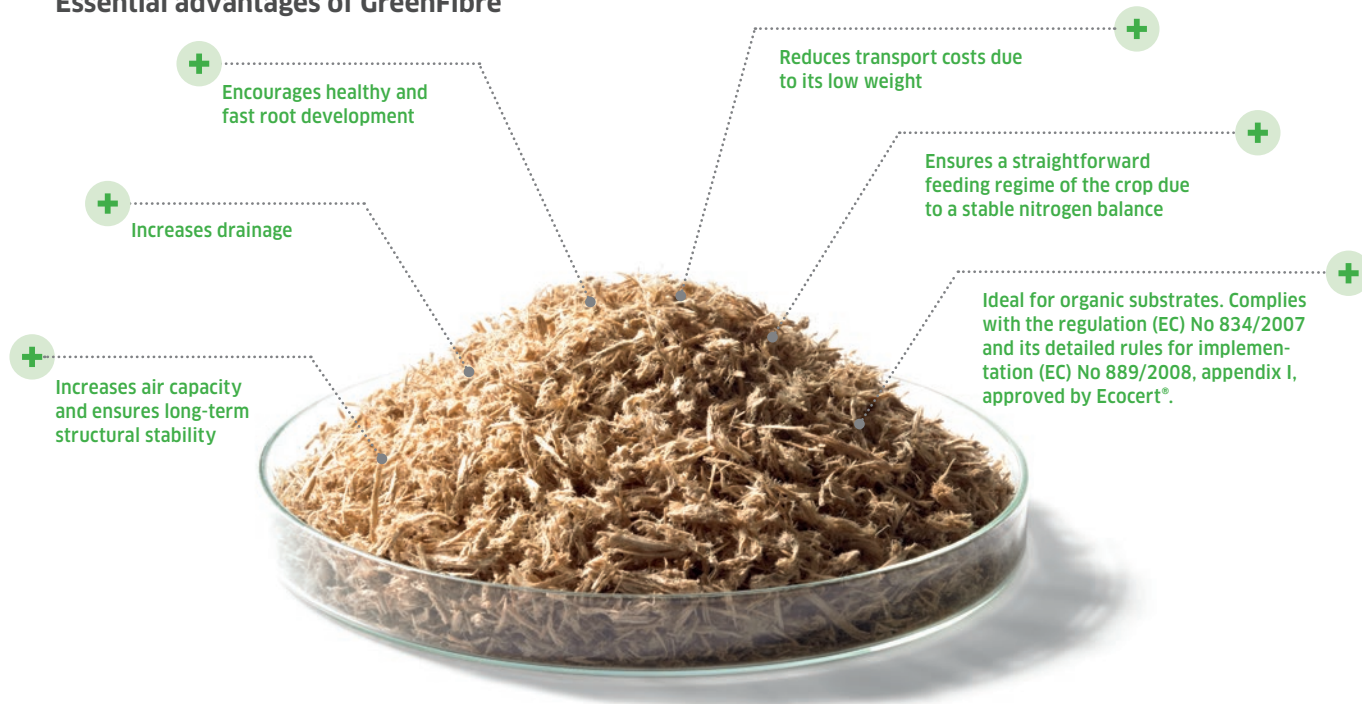
The special production process ensures that GreenFibre has a very low content of fine particles. This reduces any compaction of the substrate and prevents a reduction in the air capacity during cultivation. The coarse particles of GreenFibre are better defibrated what ensures better drainage and a uniform distribution in the substrate.



# GreenFibre from Klasmann-Deilmann

GreenFibre from Klasmann-Deilmann is a very high-quality, thermally and mechanically processed wood fibre that can structurally be fine-tuned to a wide range of individual applications. Used in combination with high-quality peat raw materials, GreenFibre has proven its worth as the ideal constituent for structurally stable growing media.

## Essential advantages of GreenFibre



### Responsibly managed sources

Alongside reliability, sustainability is at the heart of our philosophy for growing media. The wood chips used to produce GreenFibre are derived solely from responsibly managed forests. Wherever possible, we favour raw materials from local sources that meet sustainability criteria and opt for PEFC- and/or FSC-certified wood chips as the basis for GreenFibre.



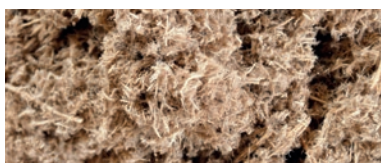
### GreenFibre is RHP certified

GreenFibre bears the RHP quality label, denoting its long-term suitability as a substrate constituent for commercial horticulture. In addition, our GreenFibre production facilities are certified to the strict RHP standards, a guarantee of consistently high quality.



#### GreenFibre fine

- Developed specifically for blocking substrates
- Supports press pot stability



#### GreenFibre medium

- Optimal for bedding and potting substrates
- Very good capillarity and drainage



#### GreenFibre coarse

- Ideal for coarse container substrates
- Long-term structural stability

## BLOCKING SUBSTRATES WITH GREENFIBRE

- Optimal recipes for very stable press pots
- Suitable for all blocking lines



Substrate	Potgrond H 90 + GreenFibre	Potgrond H 85 + GreenFibre	Potgrond H 50 + GreenFibre
Recipe-No.	844	078	847
Composition	GreenFibre fine Frozen through black peat	GreenFibre fine Frozen through black peat	GreenFibre fine White peat 'Blocking' (0 - 5 mm) Frozen through black peat
.....	.....	.....	.....
Clay			
.....	.....	.....	.....
pH-value (H <sub>2</sub> O)	6.0	6.0	6.0
.....	.....	.....	.....
Fertilisation (g/l)	1.5	1.5	1.5
.....	.....	.....	.....
Extra trace elements			
.....	.....	.....	.....
Wetting agent		Hydro S	Hydro S
.....	.....	.....	.....
Structure	Fine	Fine	Fine
.....	.....	.....	.....
Use for	Vegetable young plants	Vegetable young plants	Vegetable young plants

## SUBSTRATES WITH GREENFIBRE FOR BEDDING AND PATIO PLANTS

- Very good drainage combined with high water retention
- Ideal structure for automated tray filling lines and cultivation



**BP Substrate 4**  
fine with clay  
+ GreenFibre

**665**

GreenFibre medium

White peat  
(0 – 10 mm)

Frozen through black  
peat



6.0

1.2

Hydro S

Fine

Bedding plants



**BP Substrate 2**  
medium with clay  
+ GreenFibre

**716**

GreenFibre medium

White peat  
(0 – 25 mm)

Frozen through  
black peat



6.0

1.0



Hydro S

Medium

Bedding and  
patio plants



**TS 3**  
medium basic with clay  
+ GreenFibre

**441**

GreenFibre medium

White peat,  
moderately  
decomposed  
(0 – 25 mm)



Clay granules

6.0

1.0



Hydro S

Medium

Bedding and patio  
plants, Primrose, Viola



**TS 3**  
medium  
+ GreenFibre

**450**

GreenFibre medium

White sod peat  
(10 – 25 mm)

White peat,  
moderately  
decomposed  
(0 – 25 mm)



6.0

1.0



Hydro S

Medium

Bedding plants,  
Primrose, Viola



The products shown in this leaflet are an exemplary choice. More products with GreenFibre for any application and for specific requirements are available on request.

TerrAktiv® FT

TerrAktiv®

Perlite

GreenFibre® coarse

GreenFibre® medium

GreenFibre® fine

Coir



## SUBSTRATES WITH GREENFIBRE FOR POT PLANTS

- Very good drainage and structural stability
- Optimal root development



Substrate	Substrate 2 medium + GreenFibre	Substrate 5 medium with clay + GreenFibre	TS 1 medium basic + GreenFibre	TS 4 PLUS medium + GreenFibre
Recipe-No.	120	666	814	616
Composition	<div>GreenFibre medium</div> <div>White peat (0 – 25 mm)</div> <div>White sod peat (5 – 15 mm)</div> <div>Frozen through black peat</div>	<div>GreenFibre medium</div> <div>Peat fibres</div> <div>White peat (0 – 25 mm)</div> <div>Frozen through black peat</div>	<div>GreenFibre medium</div> <div>White peat (0 – 25 mm)</div>	<div>GreenFibre medium</div> <div>White sod peat (10 – 25 mm)</div> <div>White peat, moderately decomposed (0 – 25 mm)</div>
Clay		✓		
pH-value (H <sub>2</sub> O)	6.0	6.0	6.0	6.0
Fertilisation (g/l)	2.0	1.0	1.0	1.0
Extra trace elements		✓	✓	✓
Wetting agent		Hydro S	Hydro S	Hydro S
Structure	Medium	Medium	Medium	Medium
Use for	Geranium, Chrysanthemum, Fuchsia	Cyclamen, Geranium, Perennials, Bedding plants	Salt-sensitive ornamental plants	Ornamental plants, Foliage plants

## SUBSTRATES WITH GREENFIBRE FOR NURSERY STOCK

- Very good drainage and structurally stable in the long term
- Also available with controlled release fertiliser



Container Substrate 1  
medium  
+ GreenFibre

**559**

GreenFibre coarse

Peat fibres

White peat (0 – 25 mm)

White sod peat (10 – 25 mm)

Frozen through  
black peat



Container Substrate 2  
coarse  
+ GreenFibre

**272**

GreenFibre coarse

Peat fibres

White sod peat  
(25 – 45 mm)

Frozen through  
black peat



TS 4 Ericaceous plants  
+ GreenFibre

**254**

GreenFibre medium

White peat  
(0 – 25 mm)

White sod peat  
(10 – 25 mm)



TS 4 PLUS  
coarse  
+ GreenFibre

**620**

GreenFibre medium

White sod peat  
(10 – 25 mm)

White sod peat  
(25 – 45 mm)

White peat,  
moderately  
decomposed  
(0 – 25 mm)

6.0

1.0



Hydro S

Medium-fibrous

Shrubs

5.7

None



Coarse-fibrous

Trees, Conifers

4.8

None



Hydro S

Medium

Gardenia, Camelia,  
Ericaceous plants,  
Gaultheria

6.0

1.0



Hydro S

Coarse

Shrubs and trees,  
Ornamental plants,  
Foliage plants

**!** The products shown in this leaflet are an exemplary choice. More products with GreenFibre for any application and for specific requirements are available on request.

TerrAktiv® FT   TerrAktiv®   Perlite   GreenFibre® coarse   GreenFibre® medium   GreenFibre® fine   Coir

**DISCLAIMER:**

The statements made in this technical information sheet are based on our present knowledge and do not claim to be complete or fully accurate. We reserve the right to make changes. We do not offer any guarantee or accept any liability for individual cases, as all specific circumstances depend on the individual location, storage and growing conditions, which are beyond the reach of our knowledge and influence. The information given must not be considered as a substitute for individual advice. It is neither binding nor does it form part of a contract for the provision of advice or information.

**MORE ABOUT GREENFIBRE:**

*we make it grow*